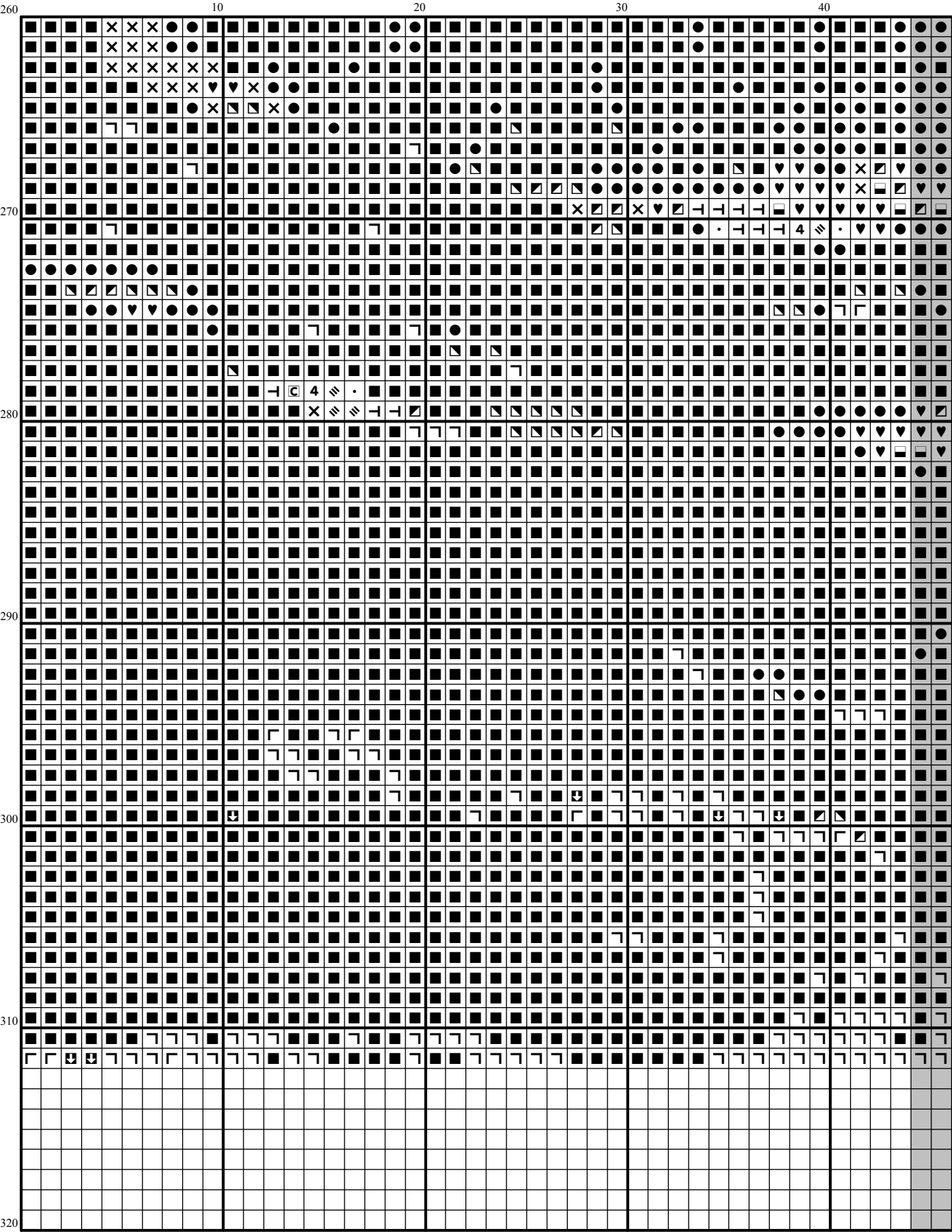
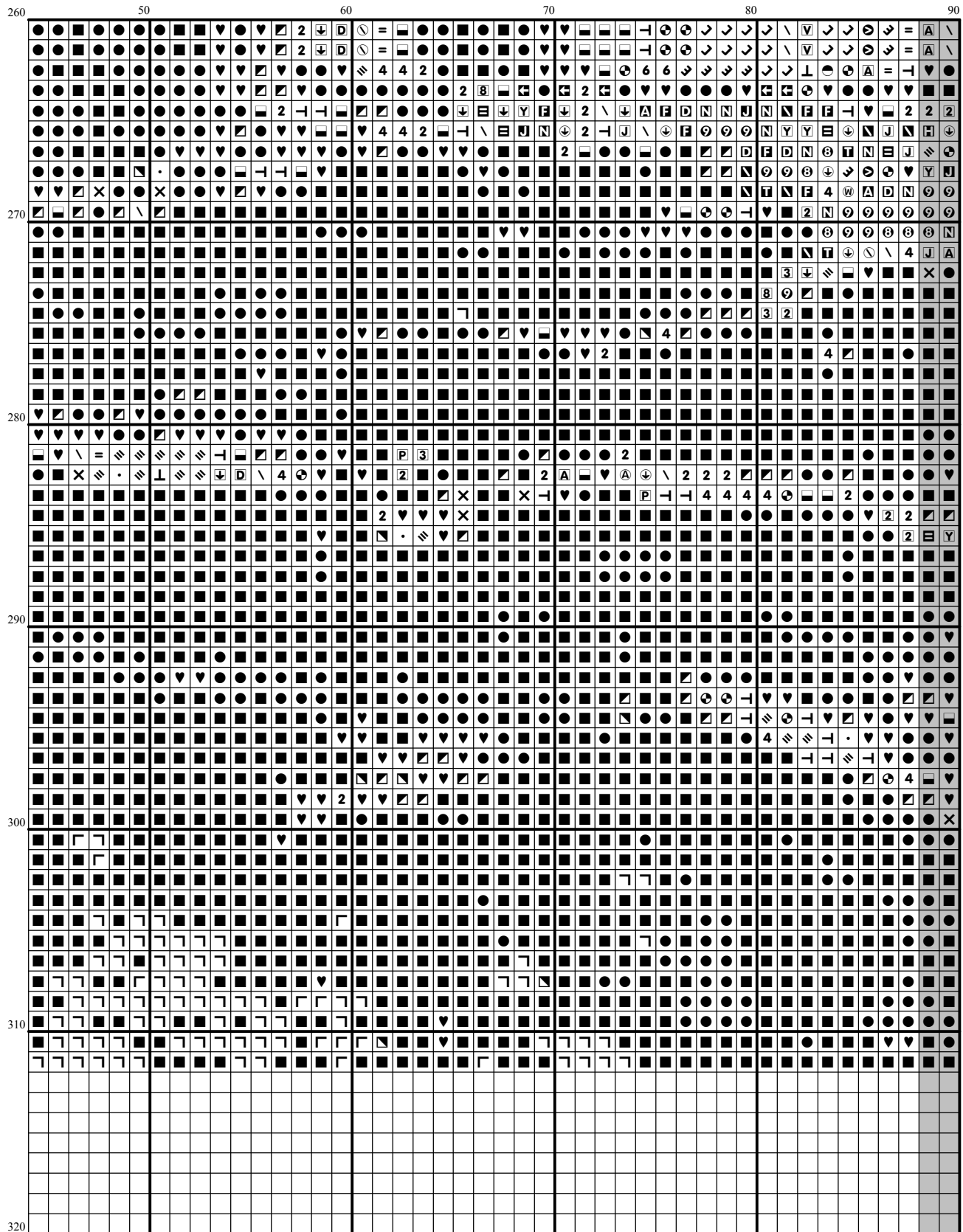
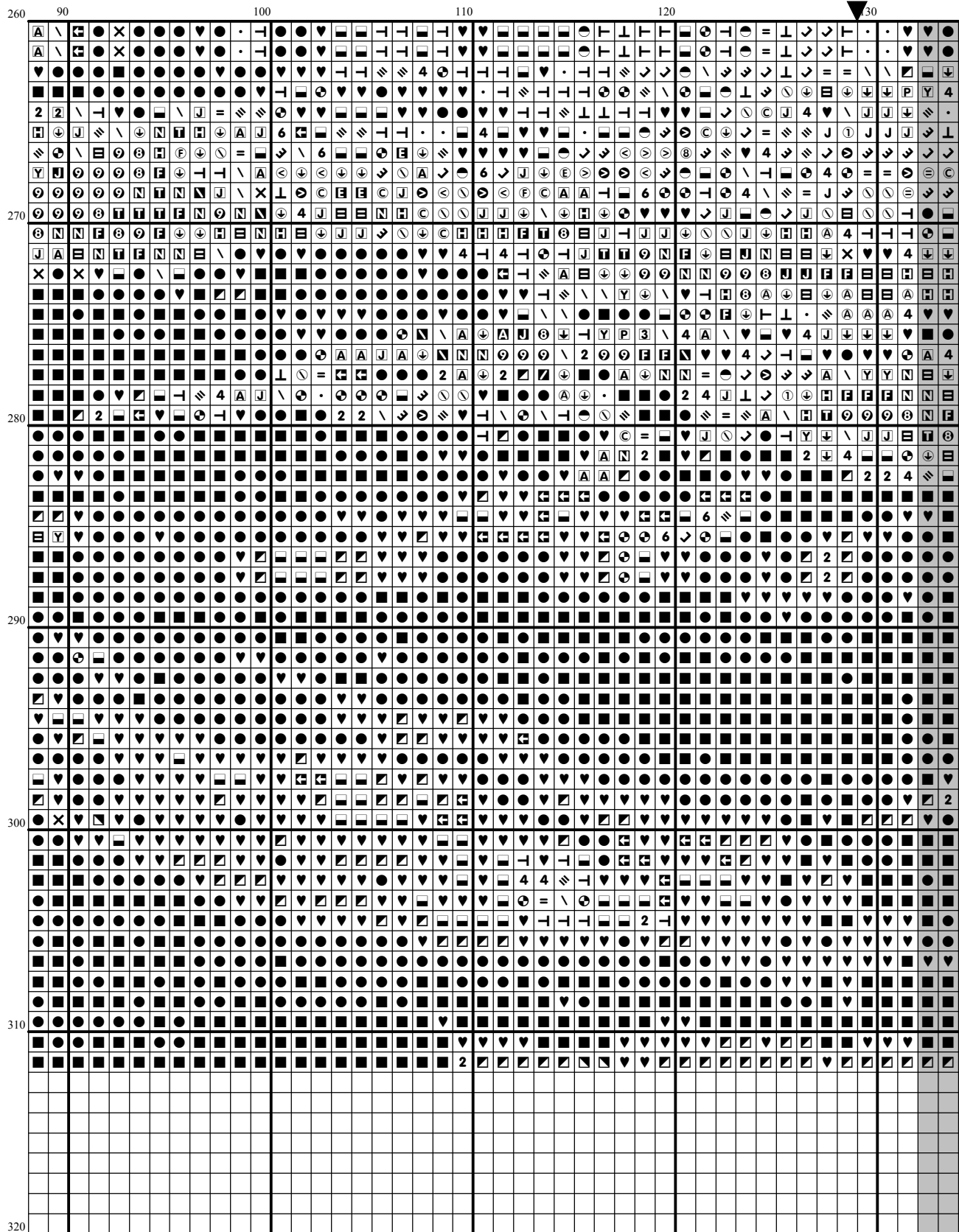
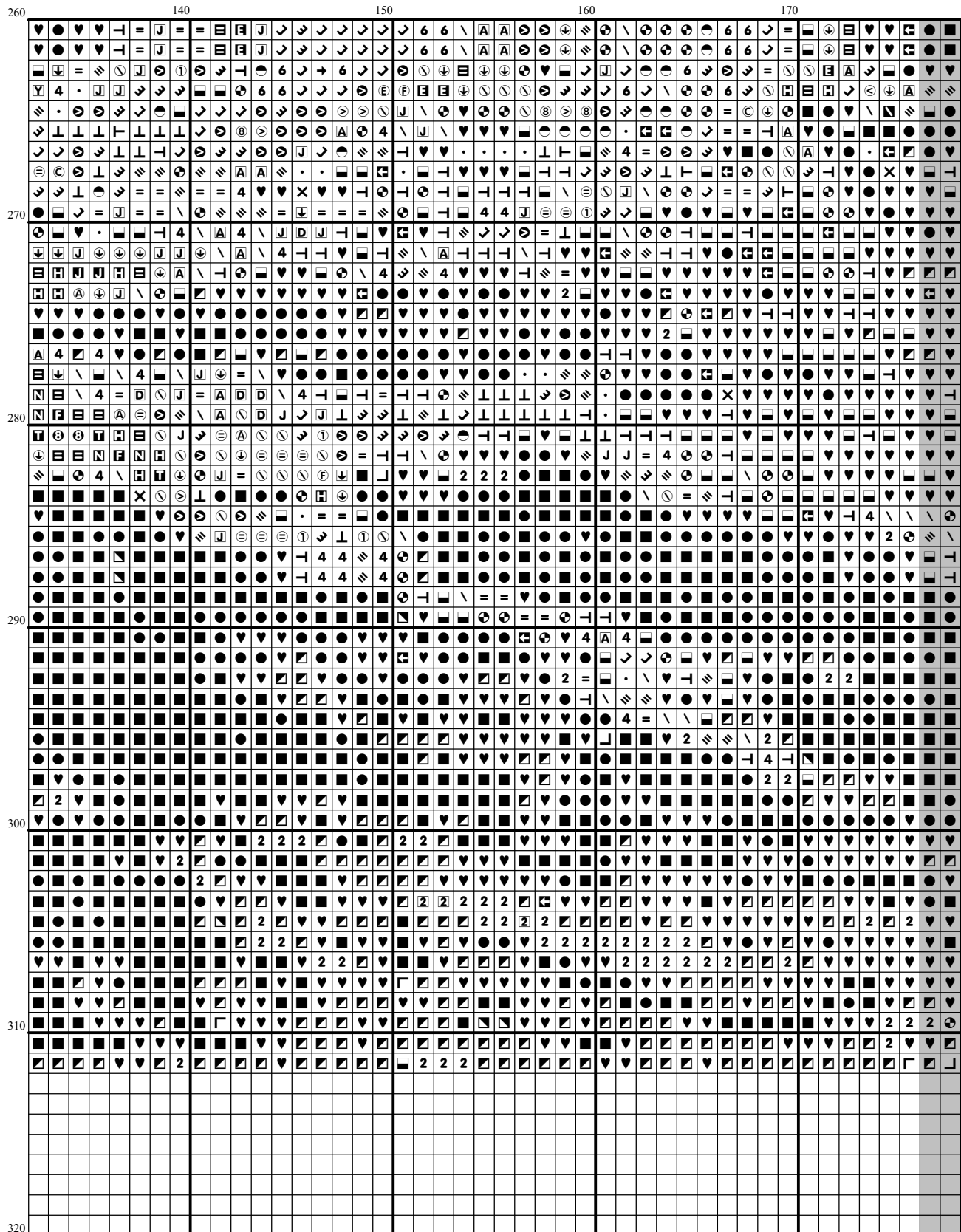


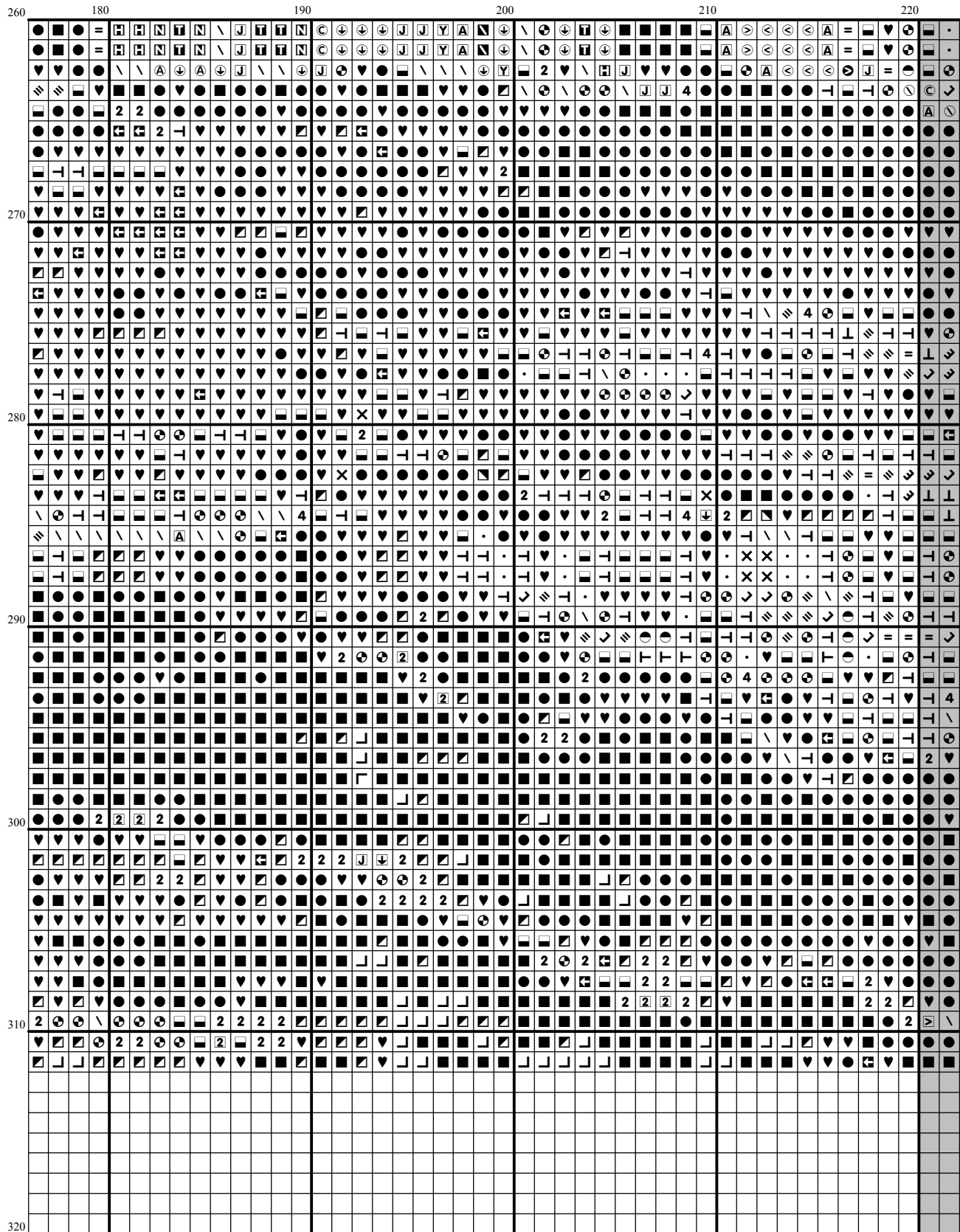
[illegible]

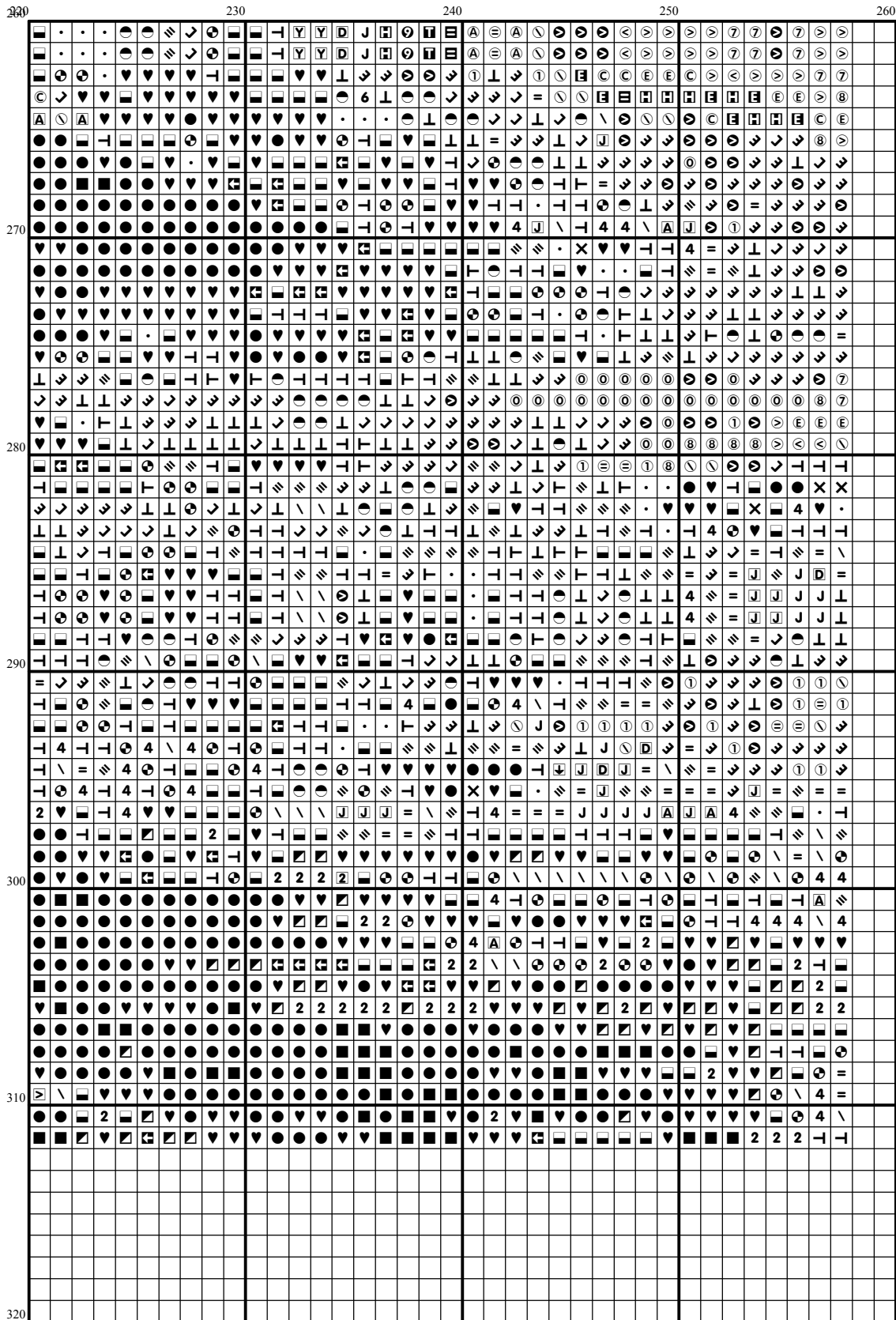












Instructions and Symbol Key for Design "NA 108 backstitch USS Constitution"

Fabric: 14 count white Aida

Stitches: 258 x 312 **Size:** 18.43 x 22.29 inches or 46.81 x 56.61 cm

Colours: DMC

Use **2** strands of thread for cross stitch

Sym	No.	Colour Name	Sym	No.	Colour Name
└	154	Prune rose	▤	161	Ash blue
▣	163	Eucalyptus green	▥	165	Pale moss green
▦	168	Mouse grey	▧	169	Pewter grey
■	310	Black	▨	311	Dark polar blue
6	312	Night blue	▩	317	Steel grey
▮	319	Shadow green	▪	336	Indigo blue
1	370	Medium mustard	S	400	Brown
2	413	Iron grey	A	415	Chrome grey
0	422	Light oak	4	437	Camel
P	451	Shell pink grey	V	453	Turtledove grey
.	500	Ivy green	4	501	Pond green
↓	502	Blue green	V	517	Dark wedgewood blue
Ⓔ	519	Sea spray blue	2	535	Stone grey
⚡	561	Cypress tree green	J	562	Malachite green
⊂	597	Iceland blue	Ⓒ	598	Lagoon turquoise
Ⓙ	612	String brown	⒫	642	Earth grey
U	644	Light green grey	8	645	Dark steel grey
L	646	Platinum grey	S	647	Rock grey
▧	648	Pepper grey	6	676	Savannah gold
9	677	Sand gold	Ⓜ	680	Dark old gold
⊖	712	Cream	5	738	Sahara cream
Ⓜ	747	Sea mist blue	N	775	Summer rain blue
ⓐ	780	Chestnut tree brown	N	801	Mink brown
7	807	Pond blue	ⓐ	822	Cotton cream
♥	823	Blueberry blue	5	825	Sea blue
L	832	Light green bronze	N	840	Hare brown
U	841	Deer brown	X	890	Deep forest green
└	924	Dark pearl green	J	926	Grey green
▮	927	Oyster grey	D	928	Light pearl grey
⊖	930	Slate grey	A	931	Blue grey
↓	932	Seagull blue	▥	934	Algae green
└	938	Espresso brown	●	939	Dark navy blue
X	950	Beige	8	959	Medium seagreen
F	964	Light sea green	V	976	Nutmeg brown
L	991	Dark aquamarine	①	992	Deep water green
		green			
⊖	993	Light green	P	3021	Cliff grey
Y	3023	Light platinum grey	M	3041	Medium lilac
W	3042	Lilac	8	3047	Silver birch beige
J	3072	Pale pearl grey	Ⓔ	3078	Pale yellow
E	3325	Azur blue	└	3371	Ebony
▣	3750	Deep petrol blue	8	3756	Cloud blue
M	3761	Light Sky Blue	⊂	3766	Light medium blue
\	3768	Storm grey	▮	3782	Gingerbread brown
Y	3787	Wolf grey	0	3790	Cappuccino brown
▧	3799	Anthracite grey	V	3802	Aubergine mauve
⊖	3808	Petrol blue	└	3809	Deep turquoise
ⓐ	3810	Dark turquoise	▥	3811	Waterfall blue

⓪	3812	Deep seagreen	⊞	3813	Light green
=	3815	Eucalyptus Green	Ⓛ	3816	Snake green
Ⓐ	3817	Polar tree green	➔	3842	Deep Wedgewood blue
Ⓤ	3844	Electric blue	⦶	3845	Turquoise
⌞	3847	Deep teal green	↘	3848	Medium teal green
↙	3849	Green turquoise	⓪	3865	Winter white
⓪	ECRUT	ECRUT			

Use 1 strands of thread for backstitch

=====	DMC 648	Peppergrey
=====	DMC 924	Dark pearl green

This chart has been designed and printed with our best intentions of being without mistakes. However, the possibility of human error, printing mistakes or the variation of individual stitching does exist, and we regret that we cannot be responsible for this.

Note: The shaded blocks on the chart represent overlapping stitches.
Copyright © Classic Cross Stitch 2005 All rights reserved.